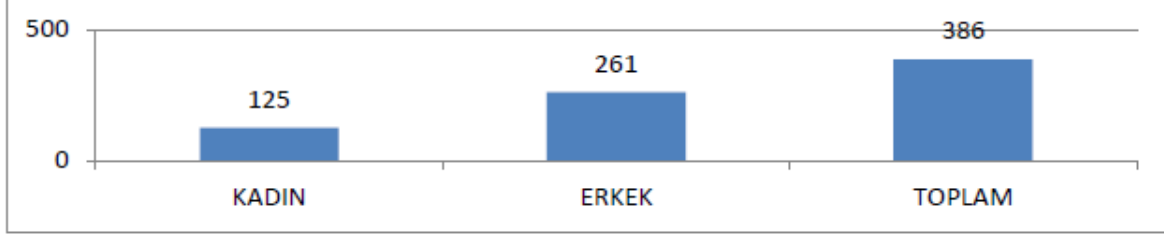


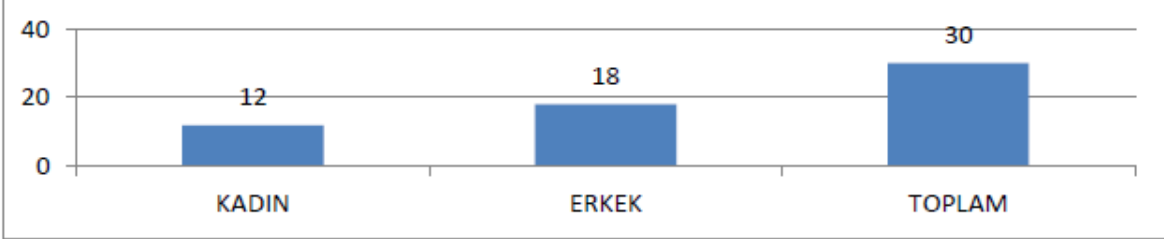
TEMMUZ 2016 SONU İTİBARIYLA RTÜK İNSAN KAYNAKLARI İSTATİSTİKLERİ

PERSONELİN CİNSİYET DURMUNA GÖRE DAĞILIMI

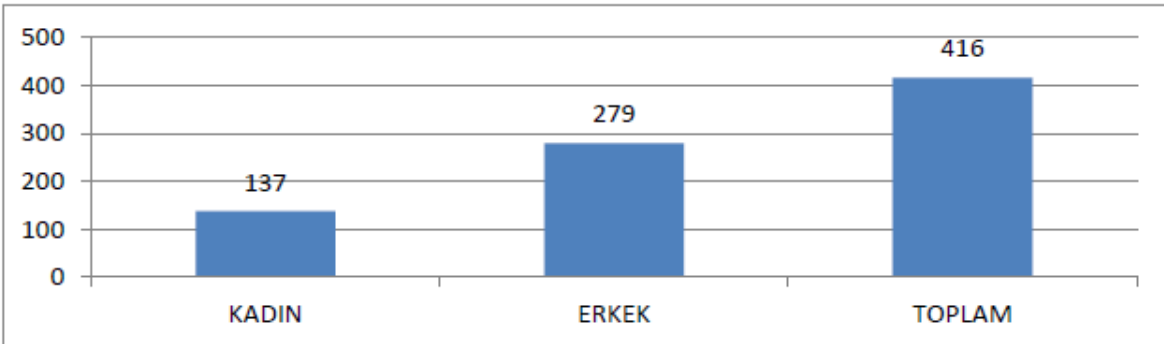
MERKEZ	
KADIN	125
ERKEK	261
TOPLAM	386



TAŞRA	
KADIN	12
ERKEK	18
TOPLAM	30

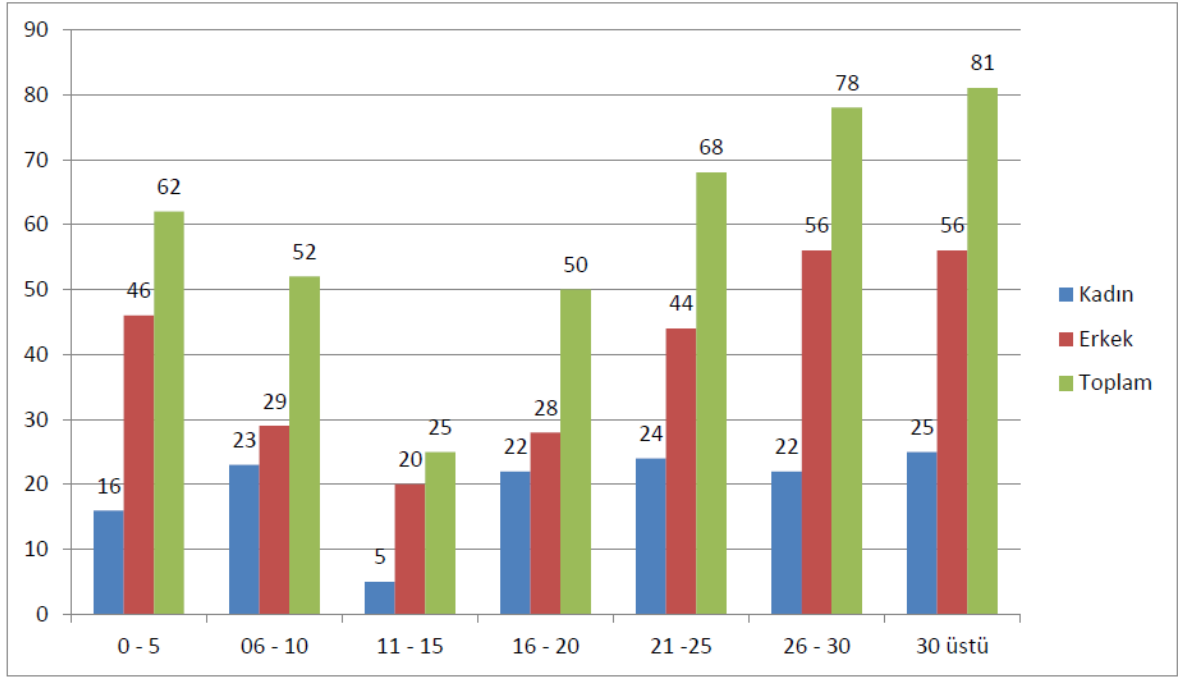


TOPLAM	
KADIN	137
ERKEK	279
TOPLAM	416



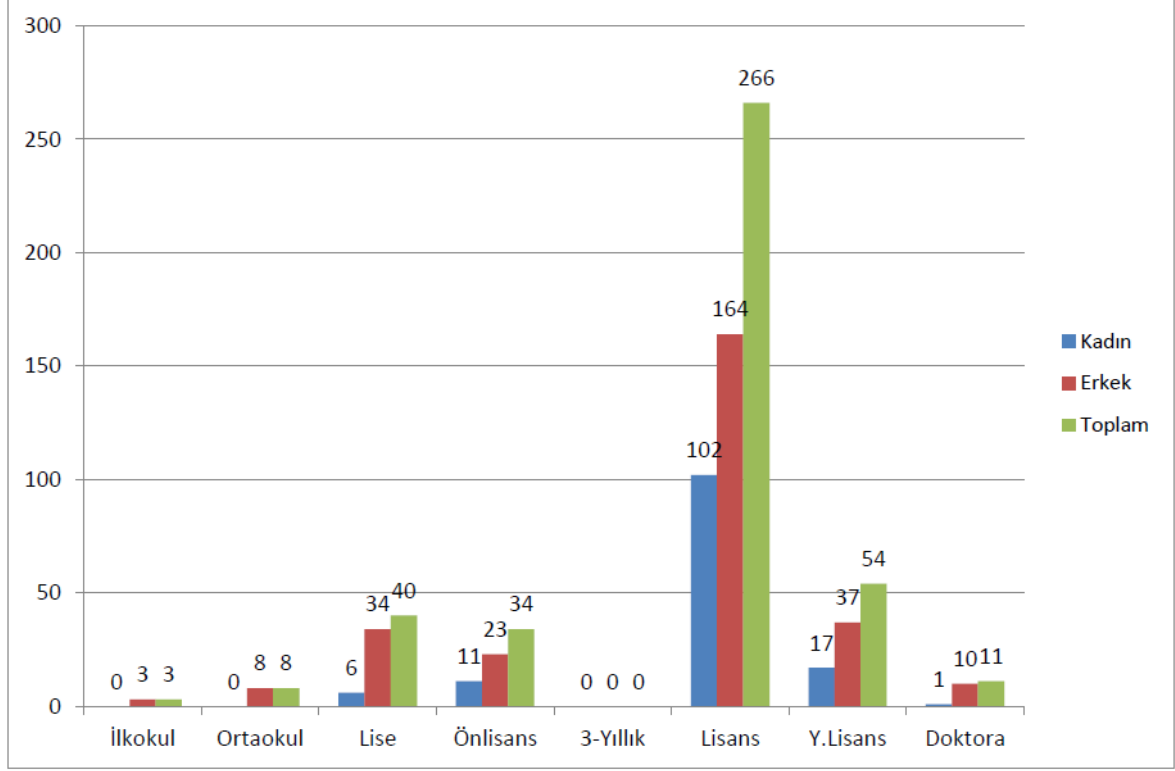
PERSONELİN HİZMET SÜRELERİNE GÖRE DAĞILIMI

	0 - 5	06 - 10	11 - 15	16 - 20	21 -25	26 - 30	30 üstü	Toplam Personel
Kadın	16	23	5	22	24	22	25	137
Erkek	46	29	20	28	44	56	56	279
Toplam	62	52	25	50	68	78	81	416



PERSONELİN ÖĞRENİM DURUMUNA GÖRE DAĞILIMI

	İlkokul	Ortaokul	Lise	Önlisans	3-Yıllık	Lisans	Y.Lisans	Doktora	Toplam Personel
Kadın	0	0	6	11	0	102	17	1	137
Erkek	3	8	34	23	0	164	37	10	279
Toplam	3	8	40	34	0	266	54	11	416



PERSONELİN YAŞ GRUPLARINA GÖRE DAĞILIMI

	21 - 30	31 - 40	41 - 50	51 - 60	60 üzeri	Toplam Personel
Kadın	14	31	46	41	5	137
Erkek	34	69	67	101	8	279
Toplam	48	100	113	142	13	416

