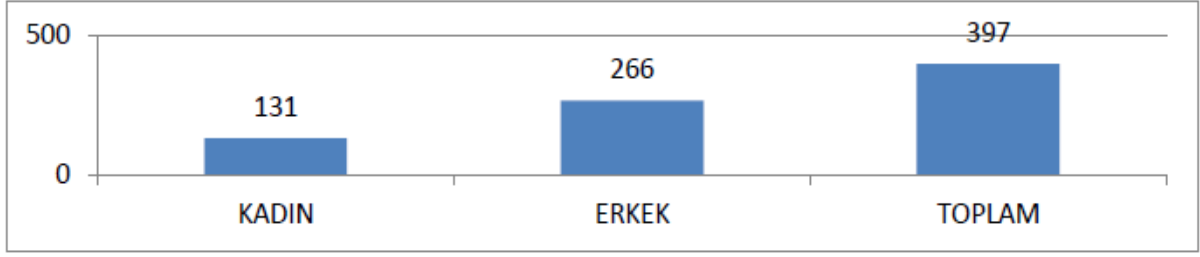


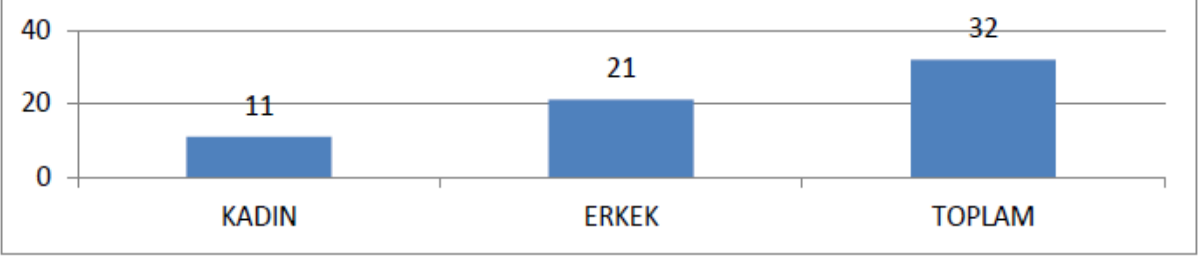
MAYIS 2015 SONU İTİBARIYLA RTÜK İNSAN KAYNAKLARI İSTATİSTİKLERİ

PERSONELİN CİNSİYET DURMUNA GÖRE DAĞILIMI

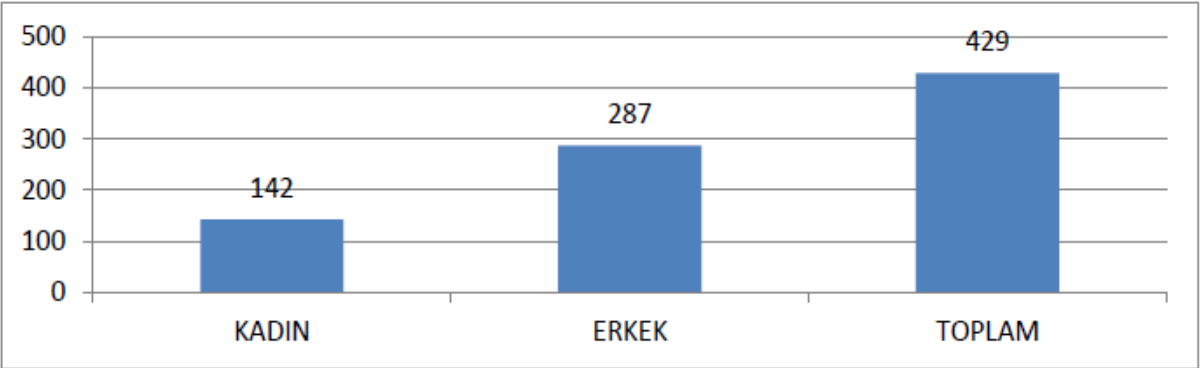
MERKEZ	
KADIN	131
ERKEK	266
TOPLAM	397



TAŞRA	
KADIN	11
ERKEK	21
TOPLAM	32

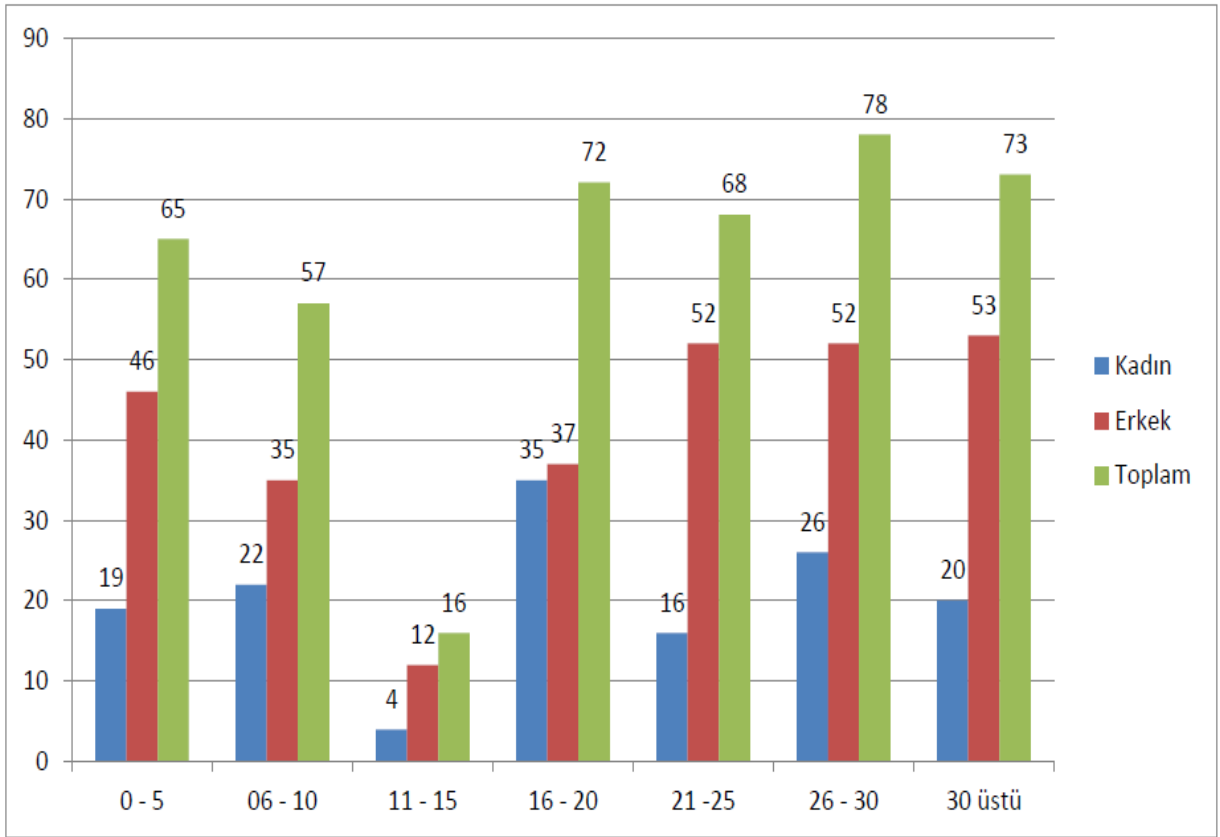


TOPLAM	
KADIN	142
ERKEK	287
TOPLAM	429



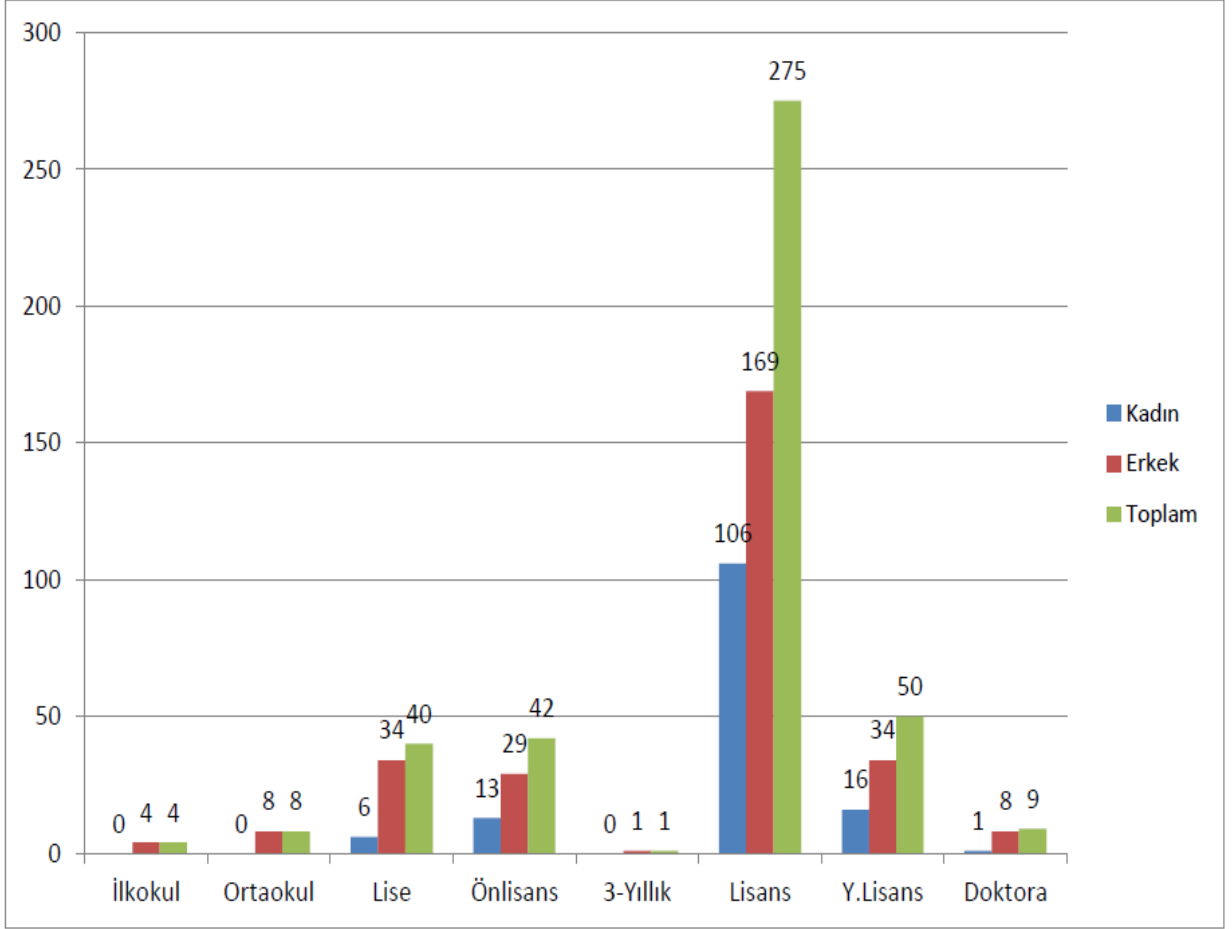
PERSONELİN HİZMET SÜRELERİNE GÖRE DAĞILIMI

	0 - 5	06 - 10	11 - 15	16 - 20	21 -25	26 - 30	30 üstü	Toplam Personel
Kadın	19	22	4	35	16	26	20	142
Erkek	46	35	12	37	52	52	53	287
Toplam	65	57	16	72	68	78	73	429



PERSONELİN ÖĞRENİM DURUMUNA GÖRE DAĞILIMI

	İlkokul	Ortaokul	Lise	Önlisans	3-Yıllık	Lisans	Y.Lisans	Doktora	Toplam Personel
Kadın	0	0	6	13	0	106	16	1	142
Erkek	4	8	34	29	1	169	34	8	287
Toplam	4	8	40	42	1	275	50	9	429



PERSONELİN YAŞ GRUPLARINA GÖRE DAĞILIMI

	21 - 30	31 - 40	41 - 50	51 - 60	60 üzeri	Toplam Personel
Kadın	15	35	49	39	4	142
Erkek	35	66	85	93	8	287
Toplam	50	101	134	132	12	429

