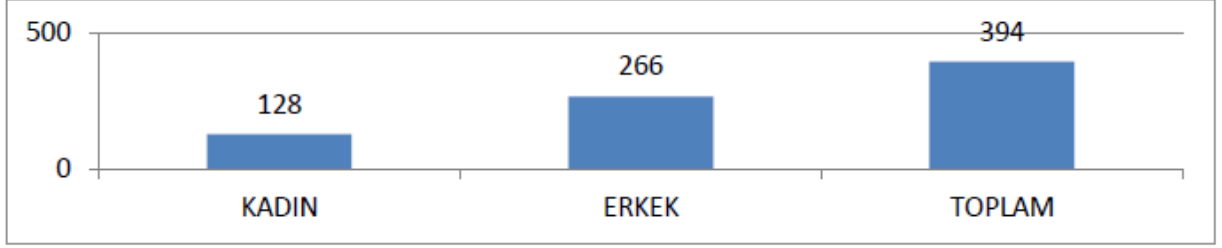


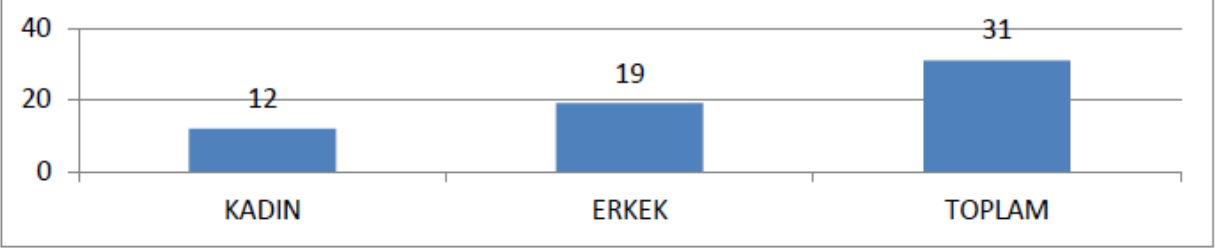
## ARALIK 2015 SONU İTİBARIYLA RTÜK İNSAN KAYNAKLARI İSTATİSTİKLERİ

### PERSONELİN CİNSİYET DURMUNA GÖRE DAĞILIMI

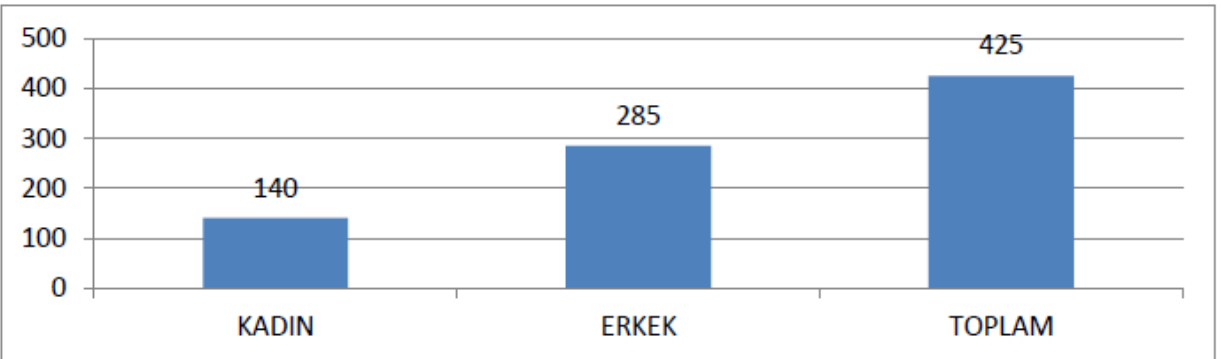
MERKEZ	
KADIN	128
ERKEK	266
TOPLAM	394



TAŞRA	
KADIN	12
ERKEK	19
TOPLAM	31

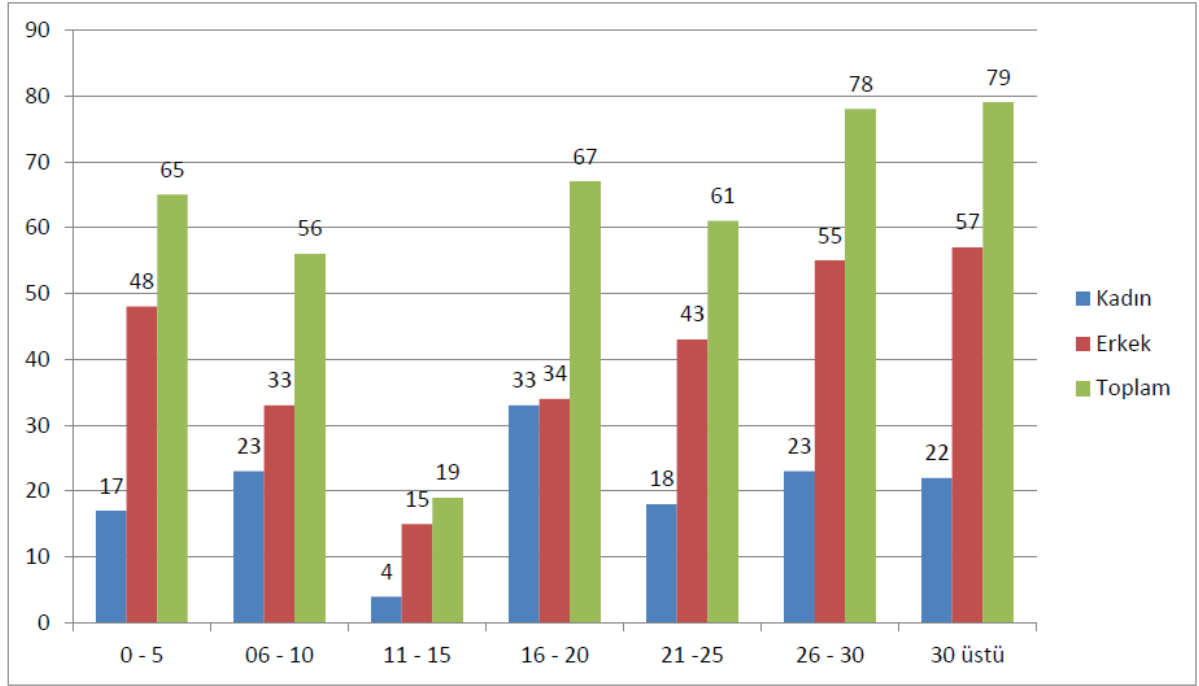


TOPLAM	
KADIN	140
ERKEK	285
TOPLAM	425



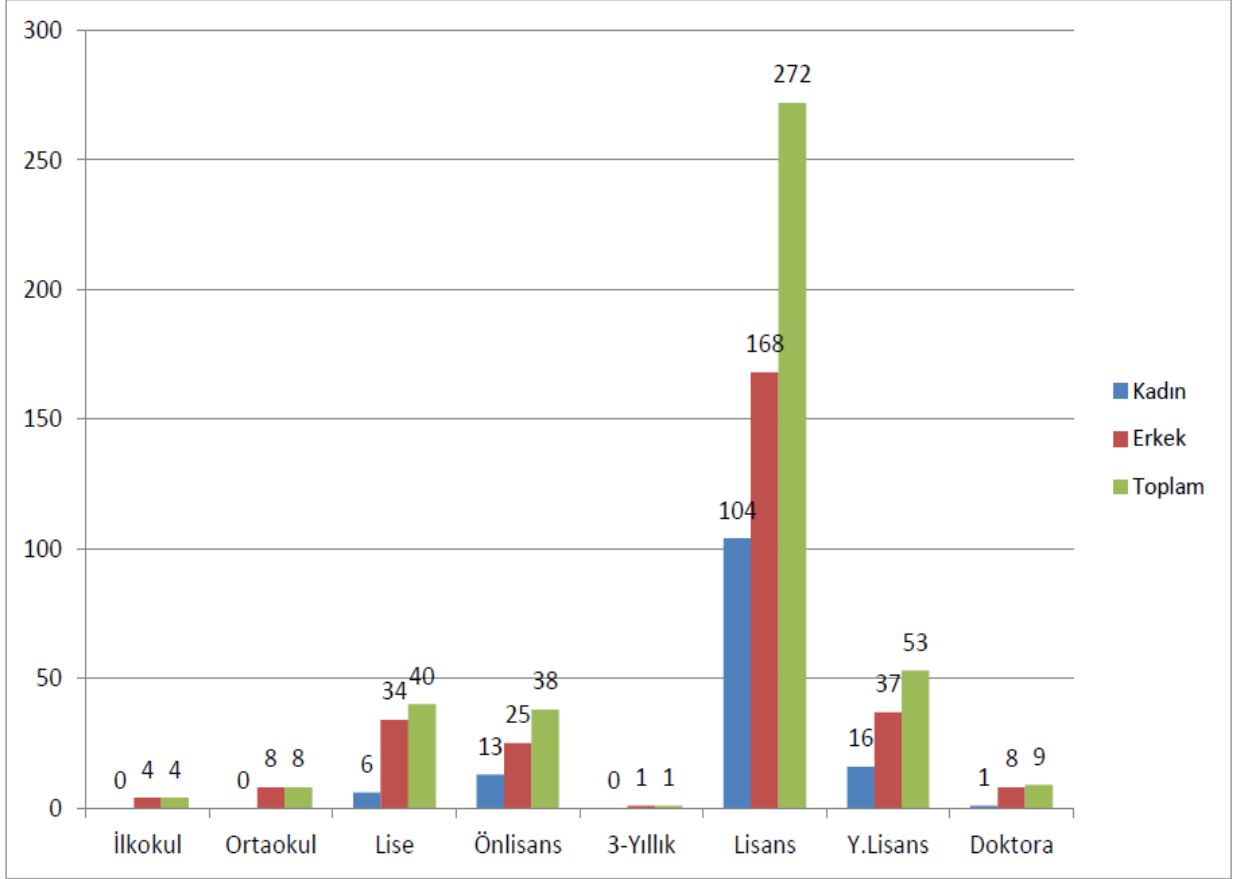
## PERSONELİN HİZMET SÜRELERİNE GÖRE DAĞILIMI

	0 - 5	06 - 10	11 - 15	16 - 20	21 -25	26 - 30	30 üstü	Toplam Personel
<b>Kadın</b>	17	23	4	33	18	23	22	140
<b>Erkek</b>	48	33	15	34	43	55	57	285
<b>Toplam</b>	65	56	19	67	61	78	79	425



PERSONELİN ÖĞRENİM DURUMUNA GÖRE DAĞILIMI

	İlkokul	Ortaokul	Lise	Önlisans	3-Yıllık	Lisans	Y.Lisans	Doktora	Toplam Personel
<b>Kadın</b>	0	0	6	13	0	104	16	1	140
<b>Erkek</b>	4	8	34	25	1	168	37	8	285
<b>Toplam</b>	4	8	40	38	1	272	53	9	425



## PERSONELİN YAŞ GRUPLARINA GÖRE DAĞILIMI

	21 - 30	31 - 40	41 - 50	51 - 60	60 üzeri	Toplam Personel
Kadın	14	33	47	41	5	140
Erkek	37	67	80	91	10	285
Toplam	51	100	127	132	15	425

